

<b>Meeting:</b>	<b>Safer Bromley Partnership Strategic Group</b>
<b>Date:</b>	<b>21<sup>st</sup> March 2013</b>
<b>Subject:</b>	<b>Performance Management Report Quarter Sep – Dec 2012</b>
<b>Author:</b>	<b>Pratheepan Jeyapragasam, Crime Analyst</b> pratheeapan.jeyapragasam@bromley.gov.uk

## **1 SUMMARY**

- 1.1 This report is presented in order to update the Safer Bromley Partnership on the performance achieved against the targets set in the last year Community Safety plan 2012/13. The report provides the latest performance monitoring data to 31<sup>st</sup> December 2012 (Quarter 3).

## **2 RECOMMENDATION**

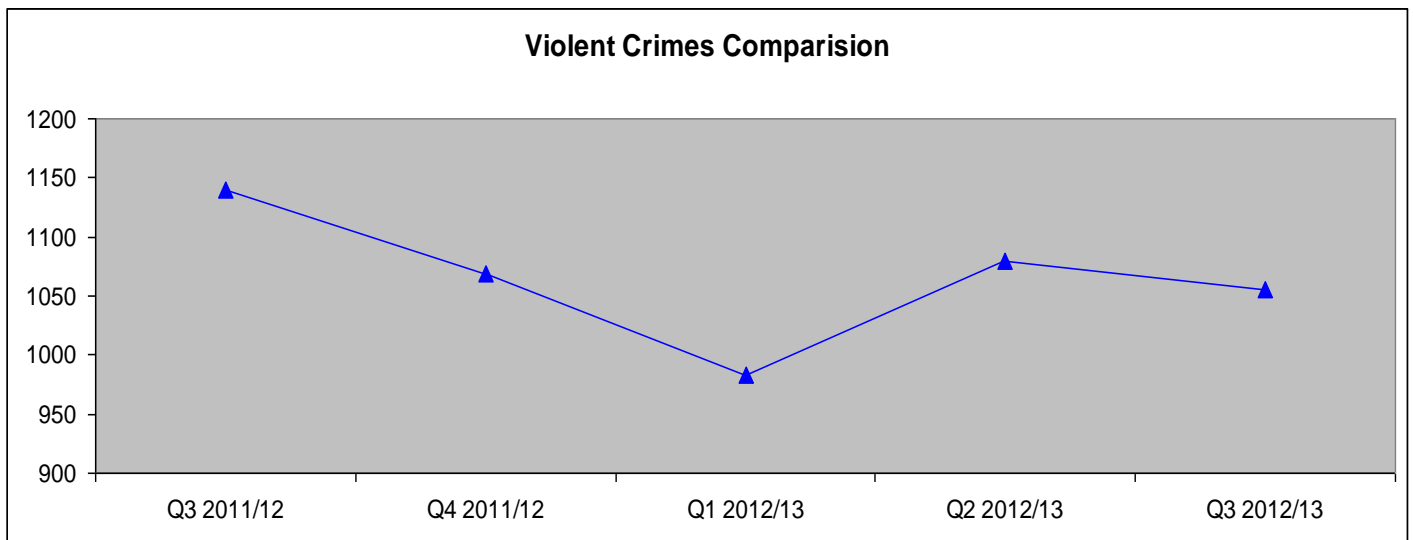
- 2.1 The Strategic Group is asked to:
- Note and comment on the performance information contained within the report.

## **3 BACKGROUND INFORMATION**

- 3.1 This report provides an update of performance at the end of Quarter 3 in the delivery year 2012/2013. The performance picture across the range of Partnership activity continues to be healthy.
- 3.2 A summary of the “portfolio” of offences and Anti Social Behaviour that are included within these overarching targets is provided at Appendix 1. Reporting on individual crime types and detail of individual operations will only be made as a routine if achievement against set targets is not being made or, in some cases, where the measurable rates of individual offences or types of offending are significantly different from expected trends and predicted patterns etc. The management of these operational level issues will be dealt with outside of the Strategic Group at the combined Police/Partnership Tactical Tasking and Coordination Group chaired by the Borough Police Superintendent.

### ***Performance Indicator 1- Reduction in Numbers of Violent Crimes Within Bromley***

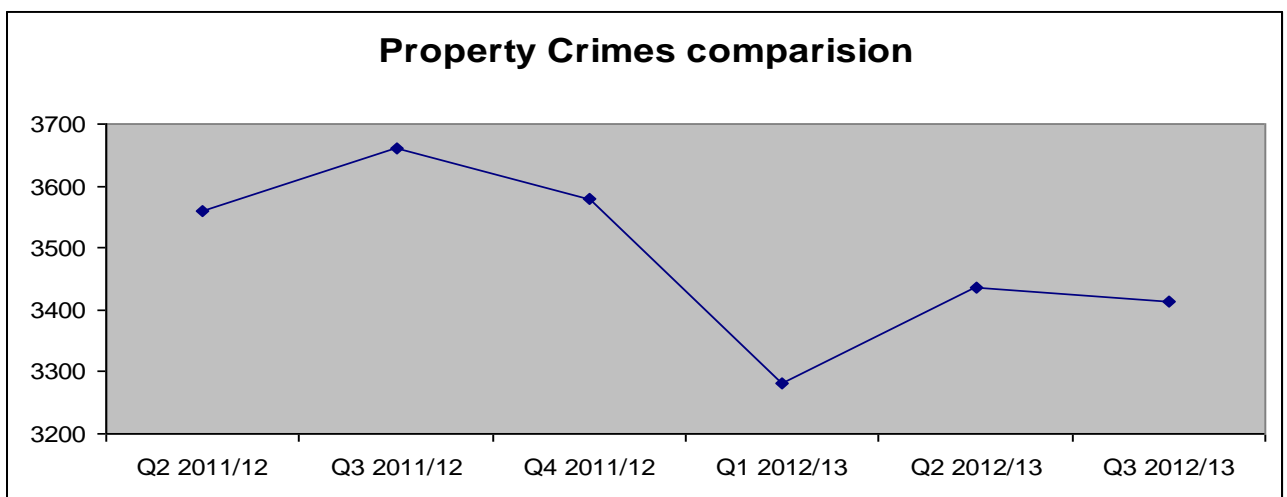
- 3.3 Offences related to Violent Crimes represent 20% (1055) of the Total Notifiable Offences in the period of Quarter 3 this year. The chart overleaf provides more detail.



3.4 During the period October to December 2012 there were 1055 Total Violent Offences reported to the Police. This represented a reduction of 85 (↓ 7%) offences compared with the same period previous year this includes a reduction of 27 Wounding/GBH offences and 43 Harassment offences.

**Performance Indicator 2- Reduction in Numbers of Property Crimes Within Bromley**

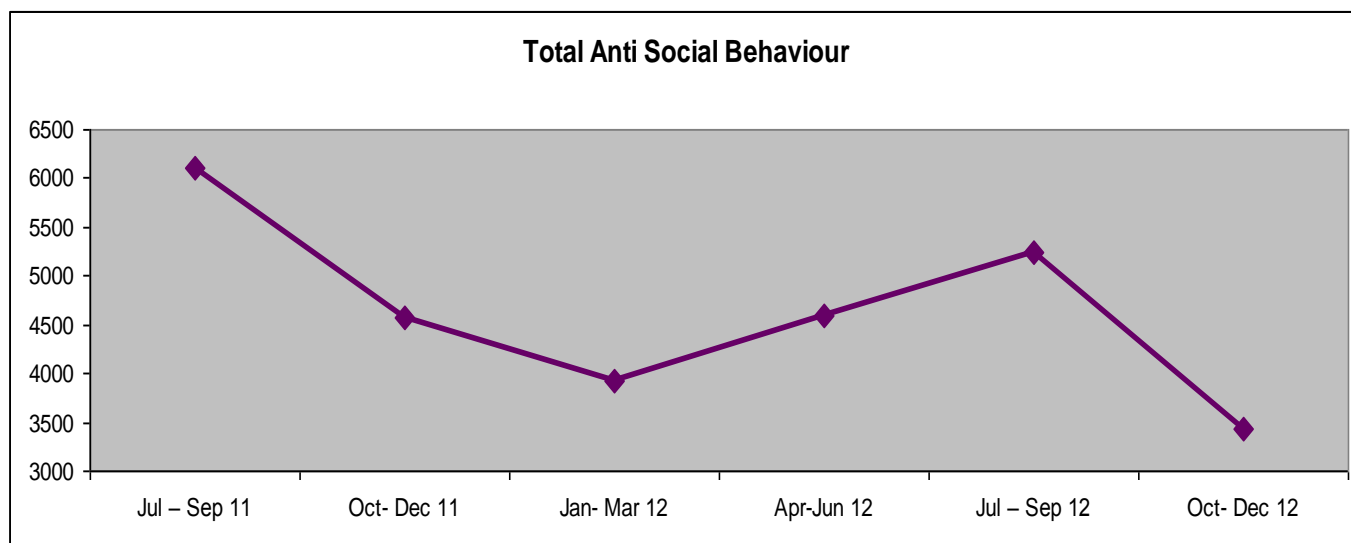
3.5 Total offences to property Crimes represent 65% of the Total Notifiable Offences in the period of Quarter 3 this year.



3.6 During the October to December period of there were 3,413 Total Property related Offences reported to the Police, this represented a decrease of 247 (↓7%) offences compared with the same period previous year.

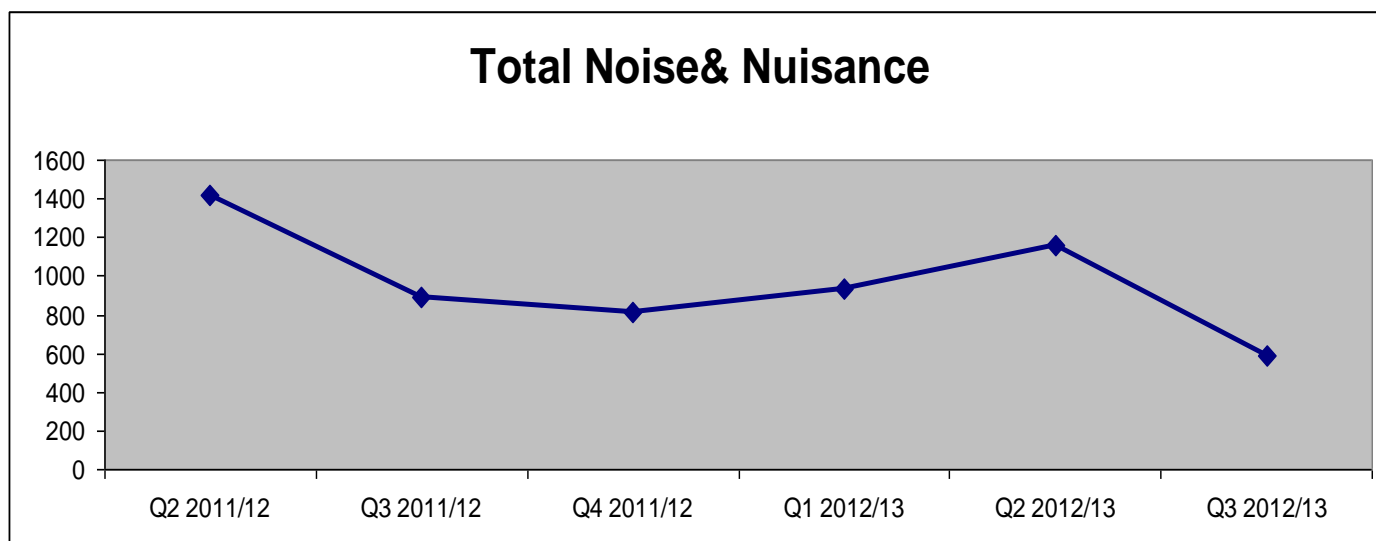
3.7 During this reporting period, the Borough had experienced 876 Burglaries, 162 Robberies, 1856 Theft & Handling and 519 Criminal Damages. Whilst the reduction in levels of overall property crime are positive, it should be noted that, compared with the same period in the previous year, Robberies were decreased by 14% (27 offences). In relation to Burglaries, Theft & Handling and Criminal Damage, all these offences are decreased. They were decreased by 6% (52 offences), 2% (40 offences) and 19% (128 offences) respectively.

### **Performance Indicator 3 Reduction in Levels of Recorded Anti Social Behaviour**

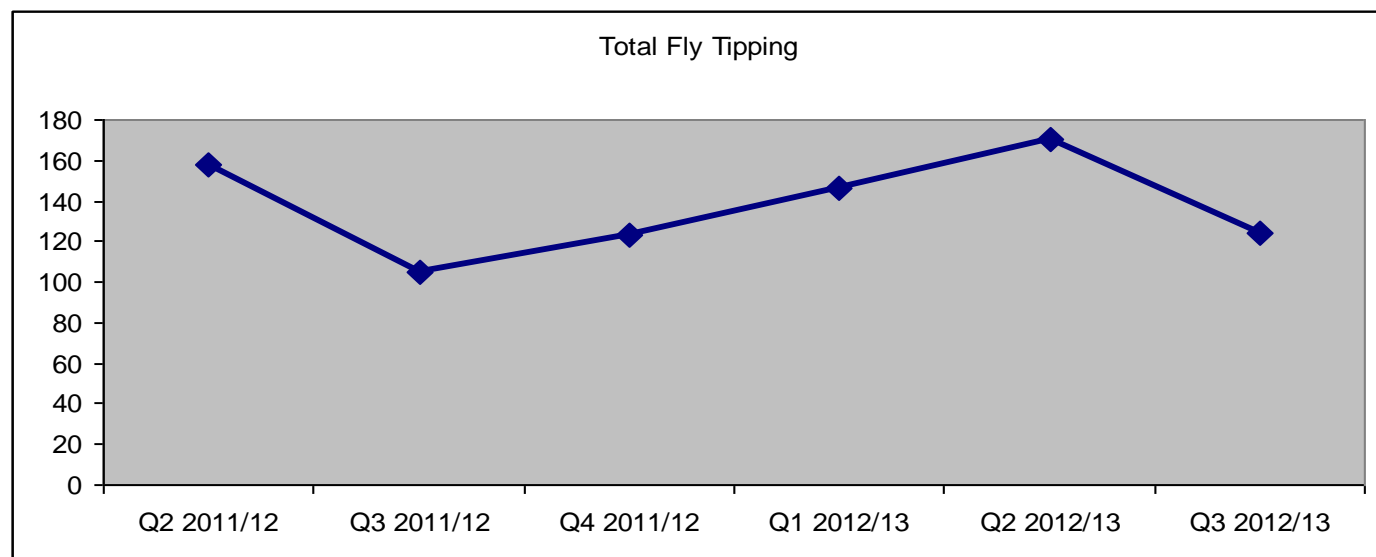


	Oct- Dec 11	Jan- Mar 12	Apr- Jun 12	Jul – Sep 12	Oct- Dec 12
Noise & Nuisance	891	809	931	1162	589
Graffiti	961	581	1108	787	530
Fly Tipping Investigation	105	123	146	170	124
ASB to Council	116	134	108	126	81
ASB to Police	2497	2276	2291	2999	2116
<b>Total ABS</b>	<b>4570</b>	<b>3923</b>	<b>4584</b>	<b>5244</b>	<b>3440</b>

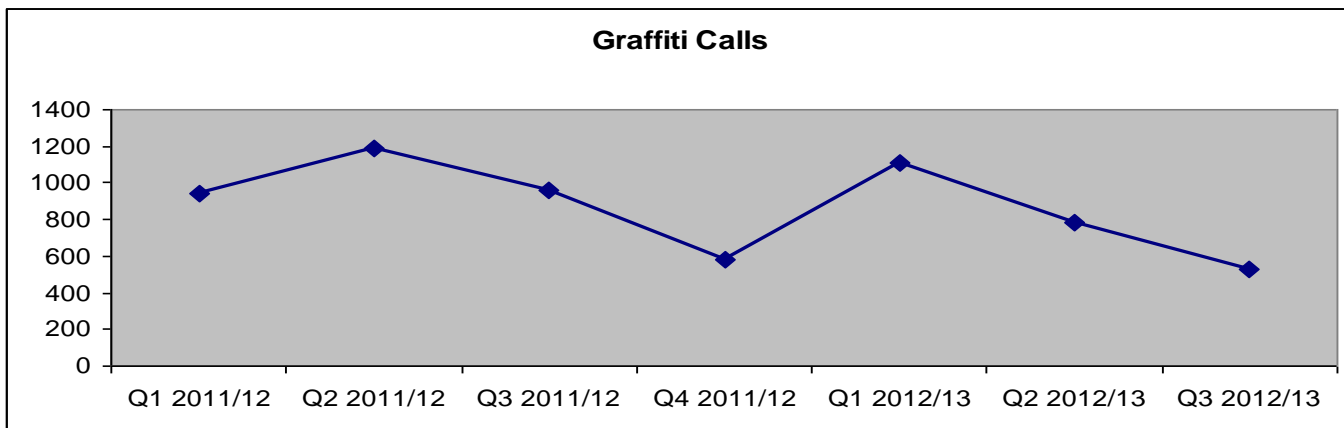
3.8 During the reporting period, the Borough has experienced a reduction of 302 (37%) incidents of ASB reported when compared with the same period last year.



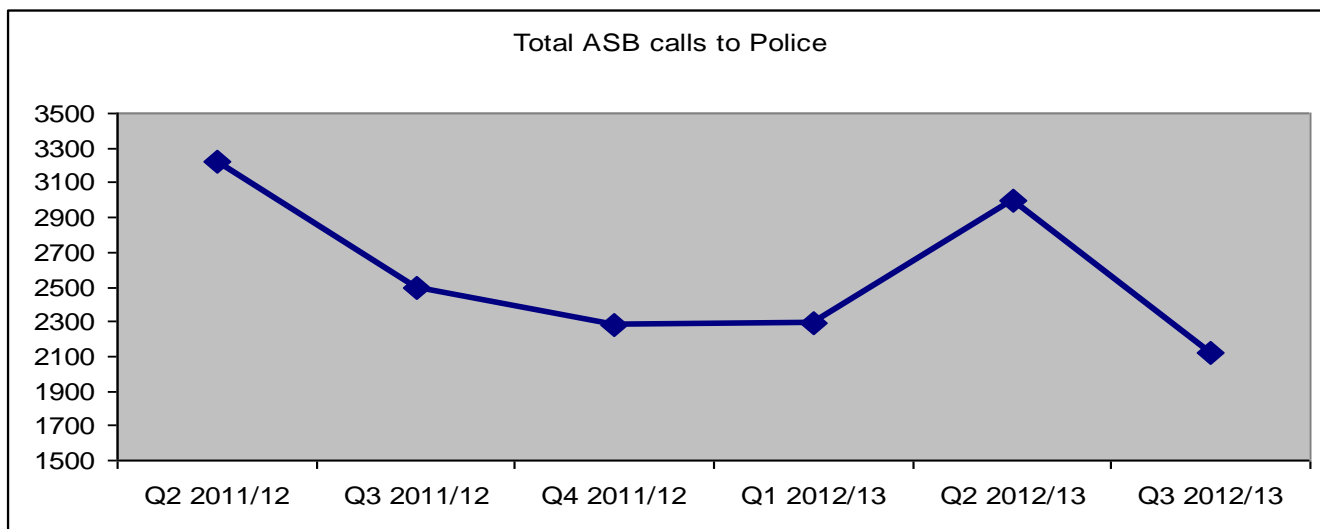
3.9 As can be seen from the figure above, during the reporting period (October to December 12), the Borough has experienced a reduction of 302 (34%) incidents of Noise and Nuisance ASB reported when compared with the same period last year.



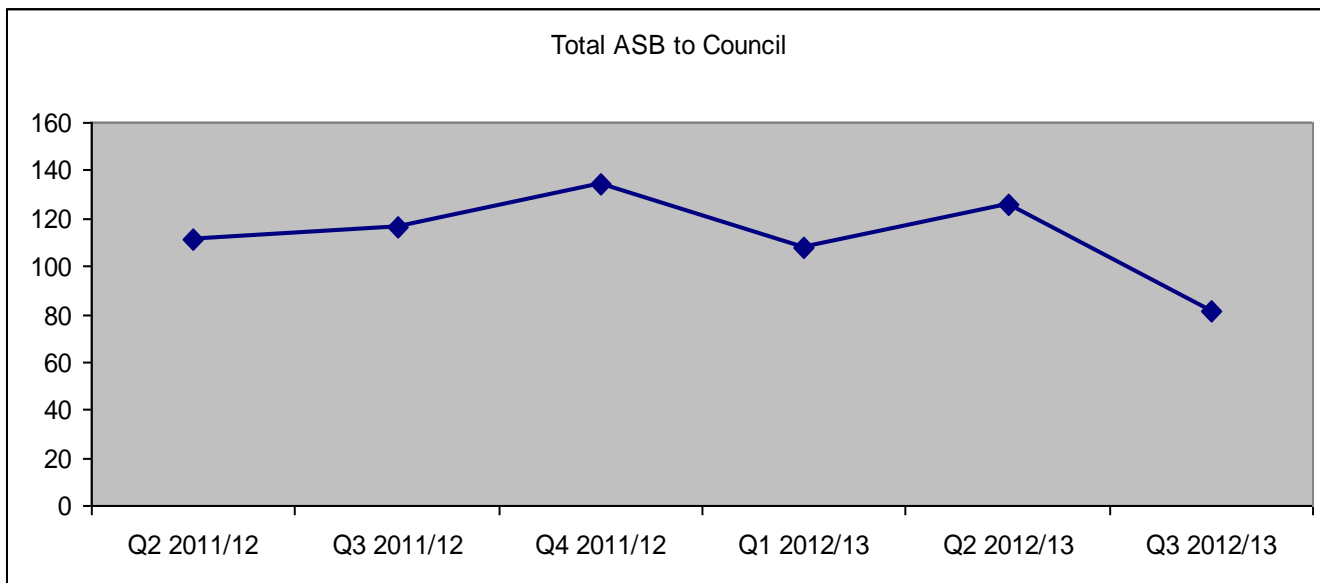
3.10 As can be seen from the figure above, during the reporting period, the Borough has experienced a reduction of 19 incidents of Fly Tipping ASB reported when compared with the same period last year.



3.11 As can be seen from the figure above, during the reporting period, the Borough has experienced a reduction of 431 incidents of Graffiti ASB reported when compared with the same period last year.



3.12 During this reporting period it is noted that there was a reduction of 381 incidents reported to police regarding ASB compared with the same period last year.

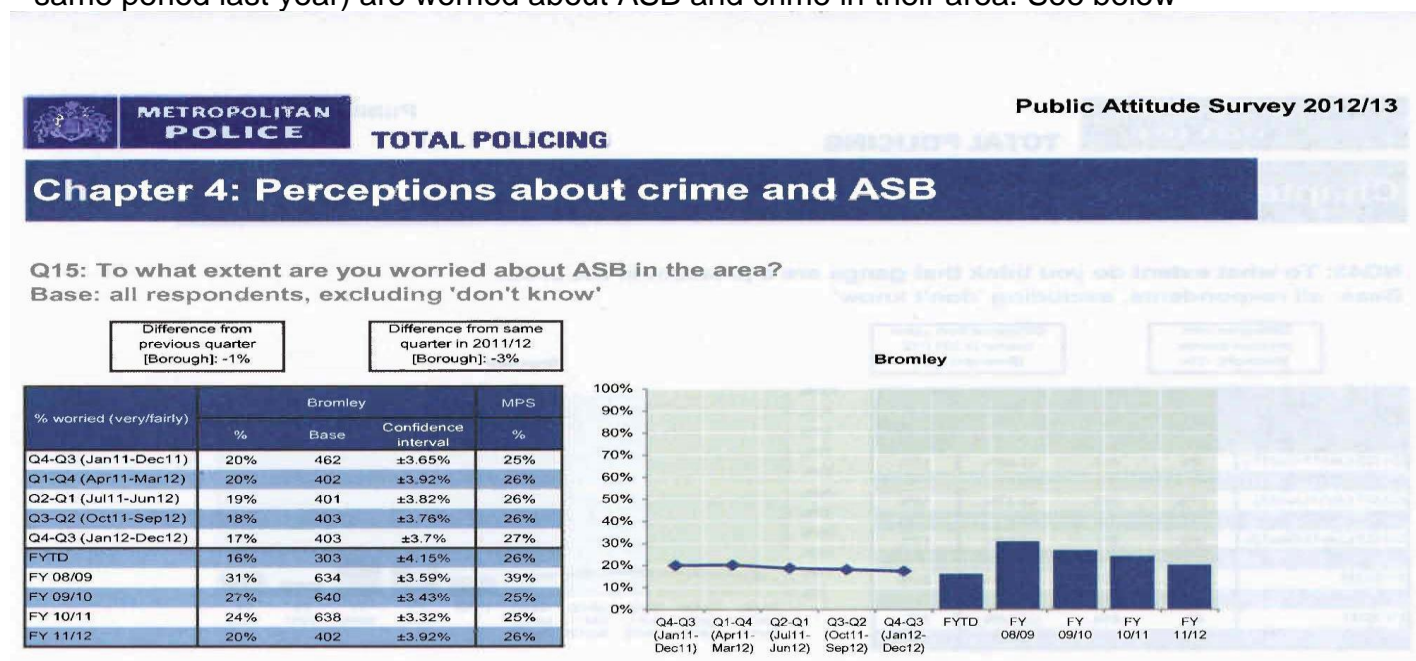


3.13 During October to December 2012 the Borough has experienced a reduction of 35 incidents of ASB reported when compared with the same period last year.

#### Performance Indicator 4 Increased Confidence in the Fact that Bromley is a Safe Place

3.14 In relation to this performance indicator, (Question 74AB :) “To what extent do you agree that the police and local council are dealing with the ASB and crime issues that matter in this area” has not been published in the Q3 report by Met police.

3.15 In relation to perception about crime and ASB less Bromley residents (↓3% -compared with same period last year) are worried about ASB and crime in their area. See below





# saferbromley partnership

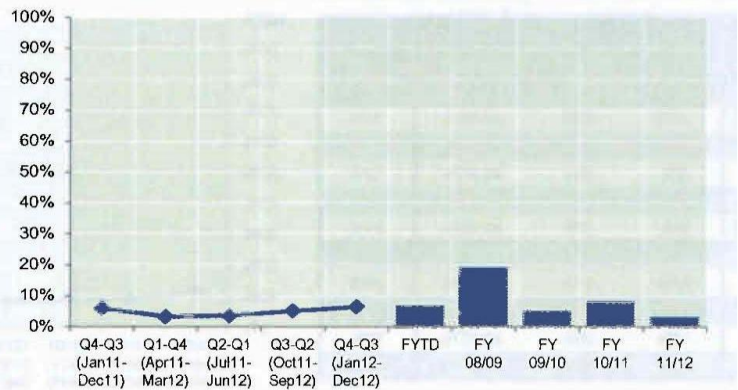
## Perceptions of ASB

Q10A-G [composite]: Perceptions of ASB Base: all respondents, excluding those indicating 'don't know' to any of the seven composite factors

Difference from previous quarter [Borough]: +2%

Difference from same quarter in 2011/12 [Borough]: +1%

% high level of worry	Bromley			MPS
	%	Base	Confidence interval	%
Q4-Q3 (Jan11-Dec11)	6%	429	±2.25%	10%
Q1-Q4 (Apr11-Mar12)	3%	366	±1.82%	9%
Q2-Q1 (Jul11-Jun12)	4%	363	±1.91%	10%
Q3-Q2 (Oct11-Sep12)	5%	369	±2.26%	11%
Q4-Q3 (Jan12-Dec12)	7%	369	±2.52%	13%
FYTD	7%	279	±3.03%	13%
FY 08/09	19%	505	±3.44%	23%
FY 09/10	5%	488	±2.02%	13%
FY 10/11	8%	551	±2.29%	12%
FY 11/12	3%	366	±1.82%	9%



## APPENDIX 1

### Performance Indicator Portfolios:

<b>Violence Portfolio</b>	
<b>Offences</b>	<b>Supporting Measures</b>
Violence with Injury	Domestic Violence
Common Assault	Domestic Violence Sanction Detection Rate
Harassment	Domestic Violence Arrest Rate
Threats/ Conspiracy to Kill	Serious Youth Violence
Blackmail	Knife Enabled Crime
Kidnapping/ False Imprisonment	Knife Enabled Crime Sanctioned Det. Rate
	Gun Crime
	Gun Crime Sanctioned Det. Rate
	Most Serious Violence
	Most Serious Violence Sanctioned Det. Rate

<b>Property Portfolio</b>
<b>Offences:</b>
Personal Robbery
Commercial Robbery
Total Robbery
Residential Burglary
Non-Residential Burglary
Theft/Taking Motor Vehicles
Theft From Motor Vehicles
Theft From Shops
Theft From Person
Theft of Pedal Cycles
Other Theft
Criminal Damage

<b>Anti Social Behaviour Portfolio</b>
<b>ASB:</b>
Noise & Nuisance
ASB to Council
Fly Tipping
ASB to Police
Graffiti